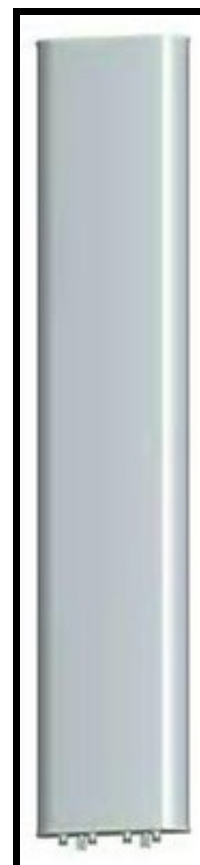


# Dinesh Micro Waves & Electronics

## Xxpol 806~960MHz 65\* 18dBi Adjustable Electrical downtilt antenna with Remote Control Unit

Electrical specifications		
Frequency range (MHz)	806~890	890~960
Polarization	$\pm 45^\circ$	
Gain (dBi)	17.5	18
Electrical downtilt ( $^\circ$ )	0~8	0~8
Half-power beam width ( $^\circ$ )	Hor:66 Vert:7.5	Hor:64 Vert:7
Sidelobe suppression (dB) (First sidelobe above main beam)	0 $^\circ$ ...4 $^\circ$ ...8 $^\circ$ 15...15...15	0 $^\circ$ ...4 $^\circ$ ...8 $^\circ$ 16...15...15
Front-to-back ratio (dB)	$\geq 25$	
Isolation (dB)	$\geq 30$	
Cross-polar ratio (dB)	$\geq 15(\pm 60^\circ \geq 10)$	
Impedance ( $\Omega$ )	50	
VSWR	$\leq 1.5$	
Intermodulation IM3 (2 $\times$ 43dBm carrier)	$\leq -150$ dBc	
Maximum input power (W)	400W	
Lightning protection	DC Ground	



Mechanical specifications	
Connector	4 $\times$ 7/16DIN-Female
Connector position	Bottom
Height $\times$ width $\times$ depth (mm)	2580 $\times$ 530 $\times$ 115
Packing size (mm)	3040 $\times$ 630 $\times$ 225
Antenna weight (kg) (with installation kit)	42
Packing weight (kg)	50
Wind loading area (m $^2$ )	1.37
Rated wind velocity (m/s)	60
Reflector material	Aluminum Alloy
Radome material	Fiberglass
Radome color	PANTONE-5517C
Mechanical tilt ( $^\circ$ )	0~10
Operating temperature ( $^\circ$ C)	-50~65
Mounting hardware (mm)	$\phi$ 50~ $\phi$ 115

**Electrical specifications**

Frequency range (MHz)	1710~1880	1920~2170
Polarization	$\pm 45^\circ$	
Gain (dBi)	17.5	18
Electrical downtilt ( $^\circ$ )	0	0
Half-power beam width ( $^\circ$ )	Hor:68 Vert:7	Hor:63 Vert:5.5
Sidelobe suppression (dB) (First sidelobe above main beam)	$\geq 15$	
Front-to-back ratio (dB)	$\geq 25$	
Isolation (dB)	$\geq 30$	
Cross-polar ratio (dB)	$\geq 15(\pm 60^\circ \geq 10)$	
Impedance ( $\Omega$ )	50	
VSWR	$\leq 1.4$	
Intermodulation IM3 (2×43dBm carrier)	$\leq -150\text{dBc}$	
Maximum input power (W)	300	
Lightning protection	DC Ground	

**Mechanical specifications**

Connector	4×7/16DIN-Female
Connector position	Bottom
Height×width×depth (mm)	1300×320×80
Packing size (mm)	1725×410×160
Antenna weight (kg) (with installation kit)	15.5
Packing weight (kg)	19.5
Wind loading area (m <sup>2</sup> )	0.42
Rated wind velocity (m/s)	60
Reflector material	Aluminum Alloy
Radome material	UV PVC
Radome color	Pantone cool gray 3u
Mechanical tilt ( $^\circ$ )	0~10
Operating temperature ( $^\circ\text{C}$ )	-50~65
Mounting hardware (mm)	$\phi 50 \sim \phi 115$

<b>Electrical specifications</b>		
Frequency range (MHz)	806~896	1850~1990
Polarization	±45°	
Gain (dBi)	14.5	16
Electrical downtilt (°)	0~10	0~10
Half-power beam width (°)	Hor:80 Vert:13	Hor:80 Vert:6.8
Sidelobe suppression (dB) (First sidelobe above main beam)	0°...5°...10° 15...15...15	0°...5°...10° 16...15...15
Front-to-back ratio (dB)	≥23	
Isolation (dB)	≥30	
Cross-polar ratio (dB)	≥15(±60° ≥10)	
VSWR	≤1.5	
Intermodulation IM3 (2×43dBm carrier)	≤-150 dBc	
Maximum input power (W)	400 / 200	
Lightning protection	DC Ground	

<b>Mechanical specifications</b>	
Connector	4×7/16DIN-Female
Connector position	Bottom
Height×width×depth (mm)	1480×380×138
Packing size (mm)	1625×520×295
Antenna weight (kg) (with installation kit)	24
Packing weight (kg)	28.5
Wind loading area (m <sup>2</sup> )	0.56
Rated wind velocity (m/s)	60
Reflector material	Aluminum Alloy
Radome material	Fiberglass
Radome color	PANTONE-5517C
Mechanical tilt (°)	0~10
Operating temperature (°C)	-50~65
Mounting hardware (mm)	φ 50~ φ 115

**Dinesh Micro Waves & Electronics**

No. 347, (C4 & C5) SLI Complex, 7th Street, Gandhipuram

Coimbatore - 641 012, Tamil Nadu, India

Phone: +(91)-(422)-4371112 / 2694313

Fax: +(91)-(422)-2694313

Mobile: +(91)-9952444222

Email: [dinesh.microwaves@hotmail.com](mailto:dinesh.microwaves@hotmail.com) , [dinesh.microwaves@airtelmail.in](mailto:dinesh.microwaves@airtelmail.in) , [sathish.varadarajan@airtelmail.in](mailto:sathish.varadarajan@airtelmail.in)

## Electrical specifications

Frequency range (MHZ)	1710~1880	1850~1990	1920~2170
Polarization	±45°	±45	±45
Gain (dBi)	16.5	16.8	16.7
Electrical downtilt (°)	0~ 10	0~ 10	0~ 10
Half-power beam width (°)	Hor.:88 Ver.:7.5	Hor.:88 Ver.:7	Hor.:90 Ver.:6.5
Sidelobe suppression ( dB ) (First sidelobe above horizon)	0°...5°...10° 16...15...14	0°...5°...10° 16...15...15	0°...5°...10° 16...15...15
Front-to-back ratio ( dB )	≥23		
Isolation (dB)	≥30		
Cross-polar ratio(dB)	≥15(±60°≥10)		
Impedance (Ω)	50		
VSWR	≤1.5		
Intermodulation IM3 (dBm) (2×43dBm carrier)	<-107		
Maximum input power ( W)	300		
Lightning protection	DC Ground (Im3)		
Variable electrical tilt	-2° to -10		
Maximum CW Input Power	500 W		



### Dinesh Micro Waves & Electronics

No. 347, (C4 & C5) SLI Complex, 7th Street, Gandhipuram

Coimbatore - 641 012, Tamil Nadu, India

Phone: +(91)-(422)-4371112 / 2694313

Fax: +(91)-(422)-2694313

Mobile: +(91)-9952444222

Email: [dinesh.microwaves@hotmail.com](mailto:dinesh.microwaves@hotmail.com) , [dinesh.microwaves@airtelmail.in](mailto:dinesh.microwaves@airtelmail.in) ,  
[sathish.varadarajan@airtelmail.in](mailto:sathish.varadarajan@airtelmail.in)

## Mechanical specifications

Dimensions (L/W/D)	1360×160×80
Connectors	2×7/16DIN-Female
Weight	11 Kg
Rated wind velocity (m/s)	60

## Electrical specifications

Frequency range (MHZ)	1710~1880	1850~1990	1920~2170
Polarization	±45°	±45	±45
Gain (dBi)	16.5	16.8	16.7
Electrical downtilt (°)	0~ 10	0~ 10	0~ 10
Half-power beam width (°)	Hor.:88 Ver.:7.5	Hor.:88 Ver.:7	Hor.:90 Ver.:6.5
Sidelobe suppression ( dB ) (First sidelobe above horizon)	0°...5°...10° 16...15...14	0°...5°...10° 16...15...15	0°...5°...10° 16...15...15
Front-to-back ratio ( dB )	≥23		
Isolation (dB)	≥30		
Cross-polar ratio(dB)	≥15(±60°≥10)		
Impedance (Ω)	50		
VSWR	≤1.5		
Intermodulation IM3 (dBm) (2×43dBm carrier)	<-107		
Maximum input power ( W)	300		
Lightning protection	DC Ground (Im3)		
Variable electrical tilt	-2° to -10		
Maximum CW Input Power	500 W		

## Mechanical specifications

Dimensions (L/W/D)	1360×160×80
Connectors	2×7/16DIN-Female
Weight	11 Kg
Rated wind velocity (m/s)	60

**Dinesh Micro Waves & Electronics**

No. 347, (C4 & C5) SLI Complex, 7th Street, Gandhipuram

Coimbatore - 641 012, Tamil Nadu, India

Phone: +(91)-(422)-4371112 / 2694313

Fax: +(91)-(422)-2694313

Mobile: +(91)-9952444222

Email: [dinesh.microwaves@hotmail.com](mailto:dinesh.microwaves@hotmail.com) , [dinesh.microwaves@airtelmail.in](mailto:dinesh.microwaves@airtelmail.in) ,  
[sathish.varadarajan@airtelmail.in](mailto:sathish.varadarajan@airtelmail.in)